



WALSH

# NEWFOUNDLAND SPECIALIZED

## Stamp Catalogue 16<sup>th</sup> edition

John M Walsh, FRPSC

John G Butt (1939 - 2000)

ISBN 978-1-988823-10-2



9 781988 823102

featuring: *essays, die proofs, postage & revenue stamps, articles, flight covers, postal rates, postcards, cornercards*

*research* provided and offered by **Jean-Claude Vasseur**, FRPSL, AEP

*fakes and forgeries* provided through research by **Ed Wener**

*forgeries* provided through research by **Richard Gratton**, FRPSC, AIEP

*Moens Newfoundland fake corrections* offered from research by **Gerhard Lang-Valchs**

*company perfins* provided through research by **Barry C Senior**

*die proof images, quantities* provided and offered by **Glen Lundeen**

*revenue rate findings* provided through research by **Peter de Groot**

*ration stamp/coupon* information contributed by **Thomas F Nemeč**, Ph.D

*stampless postal rates* provided through research by **Colin D Lewis**, FCPS

*pence to decimal 1865-73 conversion rate interpretations* from research by **Colin D Lewis**, FCPS

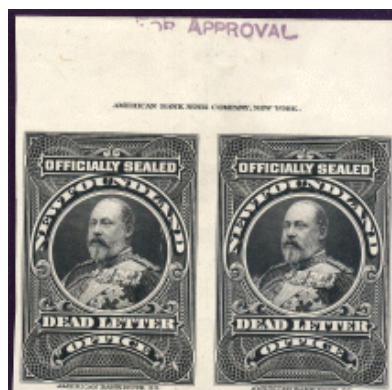
*tobacco tax images* contributed by **John B Harper** and **Terrance R Harris**

*die proofs; colour trials* provided from extracted research of **Kenneth Minuse** and **Robert H Pratt**

*ABNCo, NBNCo New York Printings Cents covers 1865 - 1879* provided through research by **Sammy Whaley**

*Railway T.P.O. and R.P.O. cancels* provide through research by **Lewis M Ludlow** and **Brian T Stalker**, FCPS

*postcard corrections* offered by **Brian C Bursey**; *improved Raphael Tuck listings* provided by **David Ogden**





## Walsh Newfoundland Specialized Stamp Catalogue

Walsh's Philatelic Service 9 Guy Street, St. John's,

Newfoundland, Canada A1B 1P4

voice: 1-709-685-0560

email: [info@nfldstamps.com](mailto:info@nfldstamps.com) site [www.nfldstamps.com](http://www.nfldstamps.com)

© 1988	First Edition	ISBN 0 — 9693434 — 0 — X
© 1992	2 <sup>nd</sup> Edition	ISBN 0 — 9693434 — 1 — 8
© 1995	3 <sup>rd</sup> Edition	ISBN 0 — 9693434 — 2 — 6
© 1998	4 <sup>th</sup> Edition	ISBN 0 — 9693434 — 3 — 4
© 2002	5 <sup>th</sup> Edition	ISBN 0 — 9693434 — 4 — 2
© 2006	6 <sup>th</sup> Edition	ISBN 0 — 9693434 — 5 — 0
© 2010	Combined 7 <sup>th</sup> Edition version	ISBN 978 — 0 — 9693434 — 7 — 9
© 2010	Nfld. Specialized 7 <sup>th</sup> Edition vol. I	ISBN 978 — 0 — 9693434 — 8 — 6
© 2010	BNA Specialized 7 <sup>th</sup> Edition vol. II	ISBN 978 — 0 — 9693434 — 9 — 3
<b>published as eCatalogues starting in 2012</b>		
© 2012	Walsh Newfoundland Specialized 8 <sup>th</sup> Edition	ISBN 978 — 0 — 9876862 — 2 — 0
© 2012	Walsh British North America Specialized 8 <sup>th</sup> Edition	ISBN 978 — 0 — 9876862 — 3 — 7
© 2014	Walsh Newfoundland Specialized 9 <sup>th</sup> Edition	ISBN 978 — 0 — 9876862 — 6 — 8
© 2014	Walsh British North America Specialized 9 <sup>th</sup> Edition	ISBN 978 — 0 — 9876862 — 7 — 5
© 2016	Walsh Newfoundland Specialized 10 <sup>th</sup> Edition	ISBN 978 — 0 — 9876862 — 8 — 2
© 2016	Walsh British North America Specialized 10 <sup>th</sup> Edition	ISBN 978 — 0 — 9876862 — 9 — 9
© 2018	Walsh Newfoundland Specialized 11 <sup>th</sup> Edition	ISBN 978 — 1 — 988823 — 00 — 3
© 2018	Walsh British North America Specialized 11 <sup>th</sup> Edition	ISBN 978 — 1 — 988823 — 01 — 0
© 2020	Walsh Newfoundland Specialized 12 <sup>th</sup> Edition	ISBN 978 — 1 — 988823 — 02 — 7
© 2020	Walsh British North America Specialized 12 <sup>th</sup> Edition	ISBN 978 — 1 — 988823 — 03 — 4
© 2022	Walsh Newfoundland Specialized 13 <sup>th</sup> Edition	ISBN 978 — 1 — 988823 — 04 — 1
© 2022	Walsh British North America Specialized 13 <sup>th</sup> Edition	ISBN 978 — 1 — 988823 — 05 — 8
© 2023	Walsh Newfoundland Specialized 14 <sup>th</sup> Edition	ISBN 978 — 1 — 988823 — 06 — 5
© 2023	Walsh British North America Specialized 14 <sup>th</sup> Edition	ISBN 978 — 1 — 988823 — 07 — 2
© 2024	Walsh Newfoundland Specialized 15 <sup>th</sup> Edition	ISBN 978 — 1 — 988823 — 08 — 9
© 2024	Walsh British North America Specialized 15 <sup>th</sup> Edition	ISBN 978 — 1 — 988823 — 09 — 6
© 2025	Walsh Newfoundland Specialized 16 <sup>th</sup> Edition	ISBN 978 — 1 — 988823 — 10 — 2
© 2025	Walsh British North America Specialized 16 <sup>th</sup> Edition	ISBN 978 — 1 — 988823 — 11 — 9

at philatelic exhibitions the NSSC has received numerous awards and recognition:

VERMEIL — INDIPEX 2011; PACIFIC EXPLORER AUSTRALIA 2005

VERMEIL — WORLD STAMP CHAMPIONSHIP SINGAPORE 2004

LARGE SILVER — ESPANA 2004 VALENCIA; PACIFIC'97 SAN FRANCISCO; WASHINGTON 2006

SILVER — STAMP SHOW 2000 LONDON; ESPANA 2000 MADRID



VERMEIL with PRIX d' HONNEUR — C3NPLE '95  
*"This is an exceptional example of a specialized catalogue.  
 Perhaps all the information one would want in such a title."*  
 Canada's Third National Philatelic Literature Exhibition '95  
 SILVER MEDAL — PHILITEX '92



*"The first true specialized catalogue of recent days. Considerable depth."* Philitex '92, New York

*"... the most significant tool a serious collector of Newfoundland philately can own."*

*"The NSSC is much more helpful for Newfoundland postal historians than other standard catalogues."*  
 BNA Topics Vol. 59, No. 3, July-September 2002

catalogue values are provided in whole *United States dollar*

A special *thank you* is offered to *Ralph Grothe* for his help in the printing of past editions.

*Thank you to my friend Thomas F Nemec* for your invaluable editorial contributions since 1988.

Andrew L. Winter enabled the eCatalogue editions to come to fruition. *Thank you very much Andrew.*

author John M Walsh: in 2011 was privileged to be offered fellowship in RPSC;

since 1998 is honoured to received eight Collectors Club Chicago prestigious PRATT AWARD;

has received the British North American Philatelic Society MEYERSON AWARD;

has received the British North American Philatelic Society WILMER C. ROCKET REVENUE AWARD;

in 2016 the Royal Philatelic Society Canada presented their impressive GELDERT MEDAL;

in 2021 the Canadian Philatelic Society of Great Britain presented their esteemed FOUNDERS TROPHY;

has received the Canadian Philatelic Society of Great Britain AIKENS-HILLSON TROPHY

"Before your philatelic happiness has pass; Step in and take a fulfilling glance!"

*The Newfoundland Specialized Stamp Catalogue (NSSC):*

A Brief Survey of the Eight Editions by Thomas F Nemeč, Ph.D. December 2011

*My friend Tom retired from teaching as full professor of anthropology in 2004; in 2007 he retired as honorary research professor; deceased 2019.*

**p.s.:** starts additional info that has been added by Walsh after the last sentence by Nemeč.

Those who study Newfoundland stamps, stationery and postal history must do research by consulting renowned philatelists and studying philatelic and historical publications, stamp and auction catalogues (with prices realized) and retail price lists. To better understand their own collections Walsh and Butt discussed their research results with local, national and international philatelists. Encouraged, they decided to publish a catalogue without prices that was a useful handbook in 1988. It boldly introduced a new numbering system to replace the antiquated systems initially developed in the USA and UK in the 1800s. As such, they challenged philatelists to reconsider the organizing principles underlying the now orthodox established systems. Following feedback they produced the 2nd edition in 1992. Realistic valuations for stamps and collateral material were suggested along with Walsh's findings on plate numbers which challenged the work of some specialists. Butt also introduced his preliminary work on outport, town and city post offices and cancels. The 17,000 km coasts of the Colony (since 1824) had anchorages that had been the sites of seasonal fishing and whaling stations since the 1500s. Eventually, between 1200 to 1500 outports were eventually established - some of which had post offices - by the late 1800s. The 3rd edition (1995) added postal rates, first flights and heretofore unknown perforation varieties. Recognition of the popularity of local pre-1949 viewcards or picture postcards (ppcs) was represented by a long list of publishers with the card captions and numeric labels. By the 4th edition (1998) that list had grown to 3600. Although most ppcs were printed locally, many others were produced elsewhere during the Edwardian era. Collecting them became a new popular hobby. Following Butt's death in 2000 Walsh soldiered on facilitated by the emergence of internet web access. The 5th (2002) added yet another collateral field of ephemera: commercial covers with or without cachets and advertisements. The rapid proliferation of business stationary reflected the Colony's developing economy and affords time capsule-like views of the products and services provided. With the expansion of the collateral sections the specialized catalogue was now also an indispensable handbook.

The 6th edition (2006) challenged existing Canadian catalogues by incorporating substantial contributions on "New Brunswick, Nova Scotia, British Columbia, Prince Edward Island and Classic Canada to 1951" (NSSC, 2006: 334). It was written by Walsh "with assistance from C.R. McGuire and contributions from Charles J.G. Verge and detailed Canada postal rate information from Brian D. Murphy and with help from Robert C. Smith." McGuire points out "It complements the period that Newfoundland existed as its own country." The cataloguing principle Walsh and Butt introduced in 1988 to enumerate Newfoundland issues continues: "... stamps printed from the same plate and/or with the same design are all listed together under one whole number." As a hefty volume of more than 500 pages, with colour illustrations it is a continuing labour of love for Walsh; a testament to his colleague John G. Butt.

In 2010 the 7th edition, a tome of well over 600 pages, was released; updates continued. Due to its size it has been re-released in two volumes: *Newfoundland Specialized, Vol. I* with 378 pages and *British North America Specialized, Vol. II* with 265 pages. In Vol. I the major addition is Peter de Groot's (deceased in 2010) research dealing with the rate fee structure as found on revenue documents. Now one could finally make sense of the franking found on documents. Volume II contains two additions: postal rates for NB., NS., BC. and PEI. and semi - official Canada airmail issues. The flights covers involving these semi-official issues are placed in sequential and chronological order.

The 8th edition was released in 2012 as two eBooks; **Walsh Newfoundland Specialized Stamp Catalogue** and **Walsh British North America Specialized Stamp Catalogue**. Together they have more than 750 pages of information. The many semi - official flights are now incorporated as well a substantial listing of Canada Government Official Airmail Flights to 1996. Forgery items of Newfoundland stamps as well all the BNA Colonies are added.

Now, the question is: what will a 9th edition contain, not whether?; T.F. Nemeč (deceased 2019).

**p.s.:** by Walsh:

*9th edition 2014 has removed the previously listed and separate 1876 - 79 Rouletted issues.*

*Now they are found under their corresponding dies as found in the First Cents and Second Cents issues.*

*They were moved because Walsh NSSC lists stamps by die or colour changes not by paper separation techniques.*

*Because of this the sequence of whole numbering has changed throughout.*

*Rouletted is a term used when a wheel having slits is employed to cut paper to enable its separation.*

*The 1897 Cabot Trial Surcharges are renumbered to enable placement into their sequential year of production.*

**10th edition 2016** has added the major research work on ABNCo, NBNCo New York Printings 1865 - 1879 offered by Sammy Whaley. Latest discovered items have been added to update his work. Several articles presented. Provided for all issues are informational descriptions and where found the images, many in colour, of the die proofs and sundry developments used to create the finished post office issue; both ecatalogues have this additional feature. *\*Renumbering of all Trial Surcharges occurred due to the improved cataloging of the 1897 Queen Victoria Surcharge issue. The proper cataloging of the 1897 Trial Surcharges both in red and in red and black provide greater understanding of this issue.\**

**11th edition 2018** ecatalogues provide more overwhelming information. Die images; articles proliferate.

**12th edition 2020** ecatalogues continues to add more detailed information; dies and other findings.

**13th edition 2022** ecatalogues continues to add more detailed information; dies and other findings.

\*\*\* Major research on 1932 Resources 20.4 mm and 21 mm size and perforation 13.3 x 13.3 proves they were done by Perkins Bacon & Co prior to Waterlow & Sons printing the *Blitz* 1941 Resources issues.\*\*\*

Offsets observed in 1932 issue indicate two types paper printing presses utilized; wet ungummed; dry gummed.



**14th edition 2023** ecatalogues continues to add more detailed information; dies and other findings. BNA Canada has two massive research findings; see NSSC 114 Admiral inverted overprint proven genuine; and 1937 Mufti coil printing press types.

**15th edition 2024** ecatalogues continues to add more detailed information; dies and other findings. Newfoundland has discovery information on issues of Pence; 1932; 1941 Blitz Printing; 1942 Resources; Revenues. BNA Canada has additional NSSC 114 Admiral inverted overprint researched information showing it is genuine. Newfoundland has 980 pages. British North America has 792 pages and with revenue issues as stated.

**16th edition 2025** ecatalogues have more detail than previously known; found from ongoing auction sales. Newfoundland has discoveries of 1932 as found in *Perkins Bacon Engravings Book 1923–1935* and die books. BNA Canada adds information on Canada die proofs. Newfoundland has 1032 pages; BNA Canada 800 pages.

**FOREWORD** Colin D Lewis, FCPS, Swansea, United Kingdom. February 2015 -

I continue to have the pleasure of writing the foreword to the latest updated edition of the *Newfoundland Specialized Stamp Catalogue*. John Walsh maintains the long standing tradition of this catalogue by developing and improving on the information it contains. Whereas many areas of British North America collecting have seen a downturn in interest, that of Newfoundland continues to increase in popularity and this can only continue when quality publications such as this are published.

It is a reflection on the sustained and dedicated efforts of the editor that each new issue of the catalogue includes new information as well as up-to-date revisions and the fine tuning of many of the existing sections. An important addition to this issue is the inclusion of the research data produced by Jean-Claude Vasseur on the 1928 First Publicity Issue, in particular the identification that two printing plates were used to produce the one cent stamp. Accurate, and the latest information is essential to the postal historian, dealer and philatelist alike, whether it is undertaking research, preparing inventory valuations or considering new fields of study. This catalogue is an asset in all these areas and a must have reference for serious collectors and postal historians, as well as professional dealers.

In the last issue the inclusion of tables of pre-stamp postal rates was most welcome and a long overdue addition to the work. It was hoped that inclusion of those rates would have stimulated users of the catalogue to forward updated information to the editor, as gleaned from their own collections and records. The accuracy of information can only be improved through users challenging the detail recorded. There are very few extant records that contain early rates and much of the included information has been gleaned from surviving correspondence. There will undoubtedly be amendments to this section as new information comes to light so if you have any suggestions please communicate them to the editor. The importance of having all the data, in respect of rates, in a single publication makes it easier for the researcher to quickly locate information whilst it simplifies updating and amending tables when new findings are brought to the notice of the catalogue editor.

The quality of a publication is best judged on the information it contains and for that to happen it must attract contributions from people who are experts in their field. To that end *Newfoundland Specialized Stamp Catalogue*, or more appropriately the editor, achieves that goal as he continuously seeks out people with advanced knowledge to contribute to the work.

John Walsh, the catalogue editor, has spent many years of dedicated research in seeking out new fields that would benefit collectors and he should be deeply thanked for bringing new areas of collecting and interest to the forefront of Newfoundland collecting.

“It is incredible you have reached the production of the 16th catalogue and how it has grown in content. A superb illustrated catalogue again and it does make me drool when I see such quality”.



'Chipman Twins'. Provenance: Colin D Lewis  
April 27, 1861 paid 6½ Pence Sterling per ½ ounce from Harbor Britain to Boston and 5 Cents US postage collect fee Boston to North Oxford Mass. Redirected to Essex Vermont. The bisected 8 Pence is equal to 4 Pence Sterling whilst the 3 Pence Currency converts to 2½ Pence Sterling.

'Chipman Twins'. Provenance: Dale-Lichtenstein; Foxbridge; Dr. Chan; Robertson

## TABLE of CONTENTS

page

BRIEF SURVEY of the EIGHT EDITIONS by Thomas F Nemeč, Ph.D.	4
FOREWORD by Colin D Lewis, FCPS Swansea, United Kingdom	5
NUMBERING SYSTEM EXPLANATION	22
VALUATION RATIONALE	23
ABBREVIATIONS	24
ACKNOWLEDGMENTS	25
NEWFOUNDLAND POSTAGE STAMPS, 1857 — 1947: A BRIEF HISTORICAL AND ICONOGRAPHIC STUDY by Thomas F Nemeč, PhD	26
NEWFOUNDLAND'S STAMP DEALERS by Terrance R Harris	38
MAP LOCATIONS of ST. JOHN'S POST and SUB OFFICES by John G Butt; David Piercey	39
COMPARATIVE TABLE OF STAMP CATALOGUE NUMBERS by C R McGuire	41
<b>NEWFOUNDLAND POSTAGE STAMPS</b>	
1857 First Pence issue	49
1860 Second Pence issue	52
1861 Third Pence issue; + with	53
articles on: <i>square sizes + inks; rectangle sizes + inks</i>	55, 59, 67, 72
1865 - 1910 Geometric Cancels <i>research article by David Piercey</i>	78
1865 - 1879 First Cents issue	83
1868 - 1879 Second Cents issue + articles on	87
<i>'tumbling stones'; 'blue raindrops'; 'major misplaced reentry'</i>	90; 92; 93
1880 - 1898 British American Bank Note Co.(Montreal Printing) + articles	96
<i>'half cent dog'; 'falling blue ice cubes';</i>	97; 103
1890 Queen Victoria	107
Info <i>Newfoundland stamps marked SPECIMEN</i>	107
Info <i>Analysis Nfld. "aniline inks" by Richard H Judge</i>	107
Info <i>Newfoundland mail FORWARDERS</i>	108
1897 John Cabot & Jubilee issue	109
1897 1890 Queen Victoria articles on	
<i>'Red Trial Surcharge; Red and Black Surcharge'; 'Missing Surcharge'</i>	112; 122; 124
1897 1890 Queen Victoria Trial Surcharges	128
1897 1890 Queen Victoria Provisional Surcharge issue	129
1897 - 1901 Royal Family issue	130
1908 Map Stamp issue	134
1897 - 1908 Royal Family & Map issues Requisition Orders with SPECIMEN	135, 136
1910 John Guy issue (lithographed)	137
1898 - 1901 Newfoundland Duplex cancels <i>researched by Carl Munden</i>	143
1911 John Guy issue (engraved)	146
1911 Royal Family issue	147
1897 - 1947 Postage Paid Cancels	154
1919 Caribou issue + <i>15¢ Prussian blue ink research article by R H Judge</i>	155; 159
1918 - 20 Cabot Trial Surcharges	166
1920 Cabot Provisional Surcharges	166
1923 - 1924 Pictorial issue	167
1928 First Publicity issue	177
1929 - 1931 Second Publicity issue (Re - engraved)	189



1920 Surcharge; partially missing



1929	Pictorial Issue Trial Surcharge article	199
1929	Pictorial Issue Trial Surcharges	201
1929	Pictorial Issue Provisional Surcharge	201
1931	Third Publicity issue (Re - engraved & watermarked)	202
1932	Info articles	206
	<i>Proof perf. 13.3 x 13.3 and 21 mm stamps originally done by Perkins Bacon &amp; Co</i>	218
	<i>Follow up proof article on 20.5 mm &amp; 21 mm were done by Perkins Bacon &amp; Co</i>	218
	<i>1932-35 First Resources Stamp Issue and Perkins Bacon Engravings Book 1923-1935 Ledger Findings</i>	227
	<i>Demonstrate Major Ongoing Wet &amp; Dry Printing Press Developmental Problems, etc</i>	251
1932 - 1938	First Resources issue	251
1933	L. & S. Post. Provisional Overprint	272
1919 - 1932	Booklets	273
1933	Sir Humphrey Gilbert issue	275
1935	Silver Jubilee King George V issue	281
1937	Coronation King George VI issue	281
1937	Long Coronation issue	282
1938	Royal Family issue	290
1939	Royal Visit issue	294
1939	Royal Visit Provisional Surcharges	294
1941	Sir Wilfred Grenfell issue	294
1942 - 1949	Second Resources issue	295
1943	Memorial University College issue	305
1946	Memorial University College Provisional Surcharge	305
1947	Princess Elizabeth	306
1947	450th Anniversary John Cabot	307
	Info article on 2¢, 3¢, 4¢ Blitz Printing post May 1941 to pre February 1942	308
	Extraction of John Ayshford published written research on <i>Last Issue of Newfoundland</i>	312
	Info article on quantity of double pane sheets printed; article on Blitz Printing stamps	330
	Info measurement article on Waterlow & Sons 1942 Second Resources stamp size	334
	Info article on setoffs / offsets	341
1939	Postage Due issue	348
1897 - 1942	Dignitary Presentation Cards (DPC)	349

## NEWFOUNDLAND AIRMAIL STAMPS

1919	Hawker Airmail Overprint	350
1919	Martinsyde Airmail Overprint	350
1919	Alcock and Brown Airmail Surcharge	350
1921	Halifax Airmail Overprint + <i>article on invert offsets</i>	351; 352
1922	Vickers-Vimy Airmail Essays	356
1927	De Pinedo Airmail Overprint	356
1930	Columbia Airmail Surcharge	356
1931	Airmail issue (unwatermarked)	357
1931	Airmail issue (watermarked)	358
1932	Dornier Do - X Airmail Surcharge	358
1932	Wayzata Essay + <i>research article by Jerome C Jarnick, OTB</i>	361
1933	Labrador Airmail issue	363
1933	Balbo Airmail Surcharge + <i>article on correct first day issue</i>	366; 367; 371
1943	Plane Over St. John's Airmail issue	366
1919 - 1940	Unissued Airmail Essay Die Proofs of 1919 -23; 1931; 1940	372
1919 - 1947	First Flight Covers	373



**NEWFOUNDLAND POSTAL STATIONERY**

1905	Officially Sealed Dead Letter Office {labels, cancels, envelopes}	387
1873 - 1933	Post Cards	389
1889	Post Bands	392
1889	Envelopes	393
1938	Business Reply Envelopes	394
1938	Registered Letter Envelopes	395
1906 - 1941	International; Imperial Reply Coupons	395
1944 - 1948	Armed Forces Air Letter Sheet Envelopes	396
1941	Canadian Armed Forces Cancels CAPOs	397
1941	American Armed Forces Cancels	397
1938	Registration Gummed Labels	398
1918 - 1948	Postal Slogans	399



First Day Use; message side confirms date  
courtesy Brian C Bursey

**NEWFOUNDLAND POSTAGE METER MACHINES**

1928 - 1949	Midget Meter	401
1928 - 1949	Neopost Meter	401
1947 - 1949	Pitney-Bowes Meter	402

**TABLE of PLATE NUMBERS**

403

**TABLE of MARGIN IMPRINT INSCRIPTIONS**

407

<b>NEWFOUNDLAND STAMPLESS POSTAL RATE TABLES</b> <i>from research done by Colin D Lewis</i>	409
1865 - 1873 Pence to Decimal Conversion Interpretations <i>from research by Colin D Lewis</i>	414
<b>NEWFOUNDLAND GENERAL POSTAL RATE TABLES</b> + Yearbook and Almanac pages	420

**NEWFOUNDLAND INLAND REVENUE STAMPS**

1898; 1907; 1911; 1938 - 1964 Revenue Issue articles	445; 449; 451
1898	Queen Victoria issue 453
1907	King Edward VII issue 454
1911	King George V issue (with imprint) 455
post 1920	King George V issue (no imprint) 455
1922	Revenue Trial Essays 456
1937	Revenue Trial Essays 456
1938 - 64	Caribou issue {perforation changes denote year of issue} 460
	1938 perf. 13.9 x 13.9, 14.3 x 14.3; 1942 perf. 12 x 12; 1964 perf. 13.25 x 13.5
1963	Caribou Provisional Surcharges 464

**NEWFOUNDLAND REVENUE DUTY RATE TABLES** *from research by Peter de Groot* 465

	Perfin Styles 472
1927	Transportation Tax information + <i>census</i> 473
1927	Transportation Tax 474
1914	Money Order Stamp Tax only Overprint 474

**NEWFOUNDLAND CUSTOM DUTY STAMPS**

1925	Edward, Prince of Wales issue 475
1938	Caribou issue 475
1932	Board of Liquor Control Relief Tax Stamp 475
1938	Beer Stamp 475



**NEWFOUNDLAND WAR SAVINGS STAMPS**

1940	War Savings Stamp issue	476
1946	National Savings Stamp issue	476
1958	Newfoundland Savings Bank Overprint	476
1940 - 64	War Savings Certificate Card Booklets <i>with help from Terrance R Harris</i>	476
1940 - 64	War Savings Certificates	476

**NEWFOUNDLAND PERFIN STAMPS**

	Lists of stamps having Company Perfins <i>from research done by Barry C Senior</i>	477
--	--	-----

**NEWFOUNDLAND TOBACCO TAX STAMPS**

1904	King Edward VII Cigarette issue	481
1904	Provisionals — 1904 King Edward VII Cigarette Surcharges	481
1907	King Edward VII Cigarette issue	482
1907	Provisionals — 1907 King Edward VII Cigarette Surcharges	482
1913	King George V Cigarette issue	482
1913	Provisionals — 1913 King George V Cigarette Surcharges	482
1913	Provisional — Cut Tobacco Cigarette Issue Surcharges	483
1922	Small Strip Cigarette Style Series A, B, C	483
1922	Provisionals — 1922 Small Strip Cigarette Surcharges Series A, B	483
1926	Small Strip Cigarette Style Series A	483
1926	Provisionals — 1926 Small Strip Cigarette Surcharges Series A	483
1928	Small Strip Cigarette Style Series A	484
1928	Provisionals — 1928 Small Strip Cigarette Surcharges Series A	484
1937	King George VI Cigarette issue	484
1937	Provisionals — 1937 King George VI Cigarette Surcharge	484
1939	Large Caribou Cigarette issue	484
1939	Provisional — 1939 Large Caribou Cigarette Surcharge	484
1940	Small Caribou Cigarette issue	485
1948	Provisional — 1940 Small Caribou Cigarette Surcharge	485
1940	Small Caribou Cigarette issue. Imperforate	485
1941	Military Canteens (Large) Cigarette issue	485
1941	Provisionals — 1941 Military Canteens (Large) Overprints	485
	Military Canteens (Small) Cigarette issue	485
1945	Cigarette Importation (Small Size)	486
	Cigarette Importation (Large Size)	486
	Provisionals — Cigarette Importation (Large Size) Overprints	487
1913	Cut Tobacco with Newfoundland Dog issue	487
	Provisional — 1907 King Edward VII Cut Tobacco Overprint	487
	Provisional — 1913 King George V Cut Tobacco Surcharges	487
1927	Tobacco Excise Large Strip Style	488
1937	Tobacco Excise Small Strip Style	488

1945	Military and Naval Canteens Tobacco issue	488
	First Tobacco Importation Strip Type	489
	Second Tobacco Importation Strip Type	489
	Third Tobacco Importation Strip Type	489
	Fourth Tobacco Importation Strip Type	490
	Plug Chewing Tobacco	490
	<b>LIST of NEWFOUNDLAND TOWN and OUTPORT POST OFFICES and CANCEL TYPES</b>	491
	<b>LIST of ST. JOHN'S POST OFFICE CANCELLATIONS; and Locations by Electoral Districts</b>	509
	<b>TOWNS with TYPES of some DIFFERENT STYLISTIC CANCELS</b>	510
	<b>LIST of LABRADOR POST OFFICE CANCELLATIONS</b>	511
	<b>RAILWAY T. P. O. and R. P. O. CANCELS</b> <i>offered from research done by Lewis M Ludlow &amp; Brian T Stalker</i>	512
	<b>NEWFOUNDLAND FORGERIES</b> <i>offered from research done by Richard Gratton</i>	527
	<b>NEWFOUNDLAND FAKES and FORGERIES</b> <i>offered from research done by Ed Wener</i>	542
	<b>MOENS NEWFOUNDLAND FAKE CORRECTIONS</b> <i>offered from research by Gerhard Lang-Valchs</i>	574
	<b>NEW YORK PRINTINGS 1865 - 1879 CENTS COVER STUDY</b> <i>offered from research done by Sammy Whaley</i>	579
	<b>NEWFOUNDLAND COINS</b> <i>offered with help from John O'Mara</i>	788
	<b>NEWFOUNDLAND PICTORIAL POSTCARDS</b> (viewcards) Introduction	794
	Multi-Views and <i>research offered by Brian C Bursey</i>	794
	C.T. American Art Coloured	797
	Atkinson Ltd, Bay Roberts	797
	Atlas Society	797
	Ayre and Sons Florizel Series	798
	Ayre and Sons H Series	798
	Ayre and Sons (238628 – 238639)	798
	Ayre and Sons View Folders	798
	Ayre and Sons	799
	Ayre and Sons (1000 Series)	799
	Ayre and Sons (1100 Series)	803
	Ayre and Sons (1200 Series)	806
	Ayre and Sons (1300 Series)	809
	Ayre and Sons (1400 Series)	811
	Ayre and Sons (1500 Series)	812
	Ayre and Sons (2000 Series)	813
	Ayre and Sons (3000 Series)	814
	Ayre and Sons (3100 Series)	815
	Ayre and Sons (3200 Series)	815
	Ayre and Sons (3300 Series)	816
	Ayre and Sons (3600 Series)	816
	Ayre and Sons (3800 Series)	817
	Ayre and Sons (3900 Series)	818
	Ayre and Sons (4100 Series)	819





Ayre and Sons (4200 Series)	820
Ayre and Sons (5200 Series)	820
Ayre & Sons (43448 and 433990 Series and 474808)	820
Bagg Bros., Curling	821
Bairds Souvenir Miniature Postcards	821
C. W. Bartlett, Petries	821
Barnes and Company	821
B. Basha, Photographer	821
J. A. Basha, Photographer	821
W. R. Bidgood, R.N.	822
C. D. Bishop	822
E. I. Bishop Photo Series	823
Botwood Art Studio – E. J. Lanning	825
Bowring Brothers	826
Fred'K. M. Brooks	826
William Brown	826
W. F. Butt	826
Garrett Byrne	826
Garrett Byrnes Series	827
Byrne's, St. John's, N.F. Series	828
Byrne's, St. John's, N.F. Series (Numbered)	829
Canada Gift and Novelty	830
Canadian Post – Card Co. Ltd.	830
W. P. Cannan, Grand Rapids, Educational Series	831
Cape Breton Postcard Co.	831
J. P. Cash, St. John's	831
Clarke Steamship Company Ltd	831
Colonial & Continental Church Society	831
P. H. Cowan P.H.C. (1 – 19) Low Numbers	831
P. H. Cowan P.H.C. (200 – 262) High Numbers or without numbers	832
P. H. Cowan, Printed in France	833
Cox & Co., St. John's	833
L. Clyde Davidson & Co., Halifax	833
Dicks and Company Glossy Coloured P. C. Series	834
Dicks and Company, 149 / Series and 118 / Series	834
Dicks and Company, 150 / Series	834
Dicks and Company Ltd., St. John's, Newfoundland	834
Dicks and Company, Collotype P.C. Series	836
Dicks and Company	836
Dicks and Company (100 Series)	836
Dicks and Company (1200 Series)	836
Dicks and Company Pictorial Series (1300 Series)	837

Dicks and Company Pictorial Series (Printed in England)	838
Dicks and Company, Glossy Photo, Postcard Series	838
Dicks and Company, Sealing Series	839
Dicks and Company, Ter – Centenary Series	839
Dicks and Company, (Printed in Britain)	840
Dicks and Company, Copyright (Newfoundland Souvenir Post Card N.S.P.C.)	841
Dicks and Company, Copyright (Real Photo Series)	843
The Douglas Co. (Studio)	844
Dunlap	844
J. E. Evans Port Rowan, Ont.	844
H. J. Feaize, Carbonear	845
Furness Warren Line, Liverpool	845
H. J. Garland, St. John's N.F.	845
Garland <b>PRECURSORS</b>	846
S. E. Garland	846
Garland Chromo – Litho Series	846
Garland Glossy Collotype Series	848
Garland Glossy Colour Series	851
Garland Halftone Series	852
Garland Moonlight Series	853
Garland Photo Iris Series	853
Garland Photolet Series	854
Garland Photogravure Series	855
Garland Platinum Series	856
Garland Series	857
Garland Tinto Gravure Series	858
Garland Sport and Pastime Series	859
Garland Statesmen Series	860
Gray and Goodland's, St. John's	860
Grenfell Association [redo: seven types listed]	861
Guardian Associates Ltd.	861
W. Harbrow, Iron Building Works, London	861
C. W. Hawley, Photographer	862
J. C. M. Hayward, Grand Falls	862
J. W. Hayward, Montreal	862
S. J. Hayward, Montreal for Canadian Railway News Company	862
T. B. Hayward, St. John's	863
W. E. Hebb, Halifax, N.S.	867
H. V. Henderson, West Bathurst N.B.	867
Herald Print, St. John's N.F.	867
Hermann Post Card Co	867
HLM	868



Hodge Bros., Twillingate, N.F.	868
Imprimerie Rotogravure S.A., Geneva	868
Jones, Hr. Grace	868
Kaiden-Keystone photo	868
Wm Kennedy & Sons (C.K.)	868
Knowlings Newfoundland Series	868
E. C. Kropp Co., Milwaukee	870
Lacey, the Post Card Magnate	870
Arthur Lane Studios Toronto	870
Walter E. Leroux	871
Lighthouse Literature Mission	871
W. J. Lockyer	871
Locomotive Publishing Company, Ltd. London	871
Marshall Studios Ltd.	871
McCoy Printing Co. "Acadian Series"	871
McCoy Printing Co. Moncton, N.B.	871
MacFarlane (Toronto)	872
C. A. Maijer Supply Co. And Travelling Photographer	873
C. L. March Co., St. John's	873
T. M. Morrow, St. John, N.B.	873
Moravian Mission [major redo]	873
Newfoundland Pictorial Post Card Co., 1904	874
Newfoundland Regiment	874
W. Notman and Son	874
Novelty Manufacturing and Art Co. Ltd. Montreal	874
Newfoundland Quarterly, St. John's, Pub 1958	875
News Publishing Co. Limited Truro, N.S.	875
S. R. Oakley	875
C. J. O'Keefe	875
P. O'Mara, Druggist St. John's Nfld	875
D. (Doris) Parsons Corner Brook Nfld.	875
J. C. Parsons, Corner Brook and also St. John's	876
R. T. Parsons	878
S. H. Parsons #1700; #X9557; 1914 Disaster	879; 880
S. H. Parsons	880
S. H. Parsons (63883 - 63926)	883
S. H. Parsons X5317	883
Parsons Art Store	884
Parker & Monroe Ltd.	884
Peco	884

Peco or Photogelatine Engraving    Numbered	886
Pugh Mfg. Co.	890
Public Benefit Store, Bonne Bay, Nfld	890
Real Photo	890
R. Roberts, Bonne Bay NF	891
C. & B. Ross, Harbor Grace	891
Rothwell & Bowring Limited St. John's Newfoundland	891
Royal National Mission to Deep Sea Fishermen    [redo: three types listed]	892
Rumsey & Co. Ltd. Toronto	892
SA, Montreal	893
Souvenir Program Coronation Regatta...St. John's, Nfld [1911]	893
W. E. Stirling, Publisher	893
The Mayrose Co Publishers, Linden N.J.	893
The Post Card Agency	893
The Royal Stores Limited	893
C. R. Tibbo, Grand Bank is deleted. His images found under Canadian Post – Card Co. Ltd.	894
Raphael Tuck & Sons, Coloured Postcards, Cecil S. Ashdown, Artist	895
Raphael Tuck & Sons Ltd, "Oilfacsim", B. F. Gribble, Artist	895
Raphael Tuck & Sons Ltd, Series I and II    [special for British Empire Exhibition 1924]	895
Raphael Tuck & Sons Ltd	895
Raphael Tuck & Sons Ltd Real Photograph    [Labrador Series 1, 2, 3]	895
Raphael Tuck & Sons Real Photograph    [different copyrights]	896
Raphael Tuck & Sons Real Photograph St. Anthony - Int'l. Grenfell Assoc. HQ    [Type 1, 2]	896
Raphael Tuck & Sons "Oilette", "Empire" series    [6 listed]	897
T. I. C.	898
Uitgave Broederhuiszeist (Netherlands)	899
Universal Postal Union	899
Valentine and Sons, Toronto and Montreal	899
Verlag Der Bildstelle Der Herrnhuter Missionshilfe E.V. Herrnhut SA	900
Verlag Der Missionsbuchhandlung, Herrnhut	900
Verlag Missionsverwaltung Lichtbildabteilung, Herrnhut SA	901
Warburgs Kunst-Forlag Kobenhaven Eneret	901
Ward & Co., Montreal	902
Warwick Bros.	902
Western Star	902
VELOX Postcards; NOKO Postcards; AZO Postcards	903
AGFA ANSCO Postcards; EKC Postcards	903
Unknown Real Photo Postcards	903
Selection of 46 Small Publishers of Newfoundland Postcards	904
<b>NEWFOUNDLAND ADVERTISING BUSINESS &amp; CORNER CARDS</b> Introduction	908
Alphabetic listings showing BUSINESS NAME; LOCATION; MESSAGE	909
<b>NEWFOUNDLAND RATION STAMPS</b> <i>booklet provided by Thomas F Nemeč, Ph.D.</i>	1021