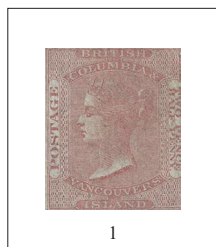
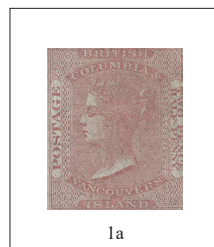


## BRITISH COLUMBIA and VANCOUVER ISLAND 1860 QUEEN VICTORIA PENCE Issue

engraved; no watermark; perf 14 x 14  
De La Rue & Co., London



1  
2½d dull rose



1a  
2½d pale dull rose

## 1865 QUEEN VICTORIA CENTS Issue

engraved; Crown over CC watermark; perf 14 x 14  
De La Rue & Co., London



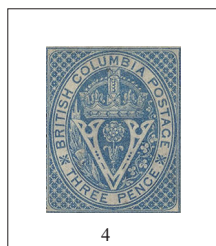
2a  
5¢ rose



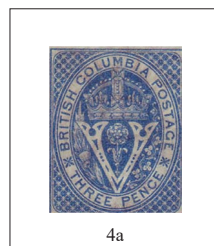
3a  
10¢ blue

## 1865 CENTS Issue

engraved; Crown over CC watermark; perf 14 x 14  
De La Rue & Co., London



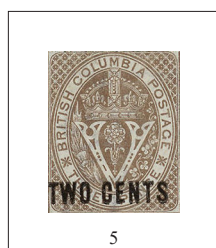
4  
3d blue



4a  
3d deep blue  
1867

## 1868-1871 PROVISIONALS

engraved; Crown over CC watermark; perf 14 x 14  
De La Rue & Co., London



5  
black on brown  
TWO CENTS  
1868



6  
black on bright red  
5.CENTS.5  
1869



8  
violet on orange  
25.CENTS.25  
1869

NOVA SCOTIA  
1851 PENCE Issue  
engraved; no watermark; imperforate  
Perkins Bacon & Petch, London  
Heraldic Flowers



1

1d red brown



2

3d dark blue



2a

3d bright blue  
1857



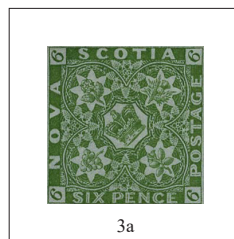
2b

3d pale blue  
1857



3

6d yellow green



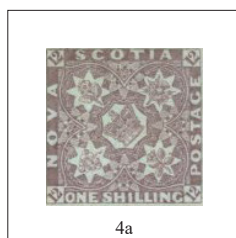
3a

6d dark green  
1857



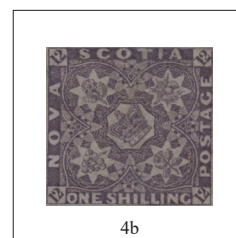
4

1s cold violet



4a

1s reddish violet  
1857



4b

1s dull violet  
1857

# PRINCE EDWARD ISLAND

## 1861 - 1870 PENCE Issue

engraved; no watermark; perf 9 x 9

Charles Whiting, London



1

1d yellow orange  
11 x 11



1a

1d brown orange



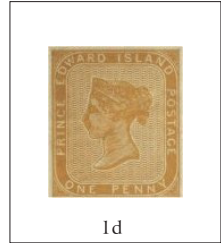
1b

1d orange



1c

1d yellow



1d

1d yellow paper



1e

1d yellow  
11 x 11.75  
1864



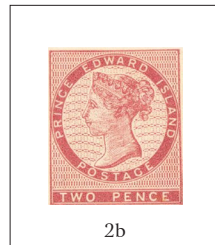
2

2d dull rose



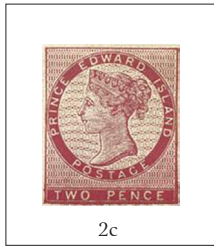
2a

2d deep rose



2b

2d rose  
11 x 11



2c

2d deep rose  
11 x 11



2d

2d deep rose  
11 x 11  
yellow paper



2e

2d dull rose  
11 x 11.75  
1863



2f

2d dull rose  
TWC for TWO  
11 x 11



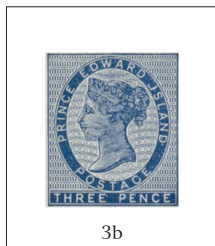
3

3d blue



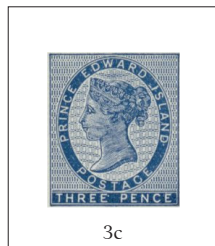
3a

3d bright blue  
11 x 11



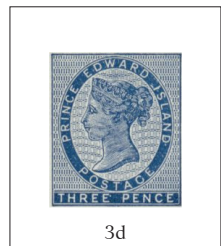
3b

3d bright blue  
11 x 11  
yellow paper



3c

3d bright blue  
JSLAND for  
ISLAND



3d

3d bright blue  
11 x 11.75  
1862